



Chartered Surveyors • Auctioneers • Valuers • Estate Agents

JOHN GOODWIN

THE PROPERTY PROFESSIONALS

EST. 1981



FREE
Entry via
Yellow Gate



Auction Sale

Wednesday 10th October • 10am

Teme Hall, Three Counties Showground, Malvern WR13 6NW

A collective sale of antique and other furniture, effects, collectables and miscellaneous inc. vehicles



Books

Britton, History of Cathedral Church Hereford, Famous Sporting Prints, Henry Alken, qty. Shell Guides, gilt edge travelling bible set, large folio Geoffrey Chaucer, The Canterbury Tales, leather bound folio Halls Encyclopaedia, John Wyndham Midwich Cuckoos 1957 1st ed, leather bindings, Bates illustrated travels, Woods illustrated natural history, qty. books clock related, qty. books aircraft, military, naval and aviation, medical and shipping related, misc books inc. Observers, Ladybird etc, old maps, Star Trek related, qty. canal related books, children's books, interesting design related soft colour books inc. Heals etc.

Clocks

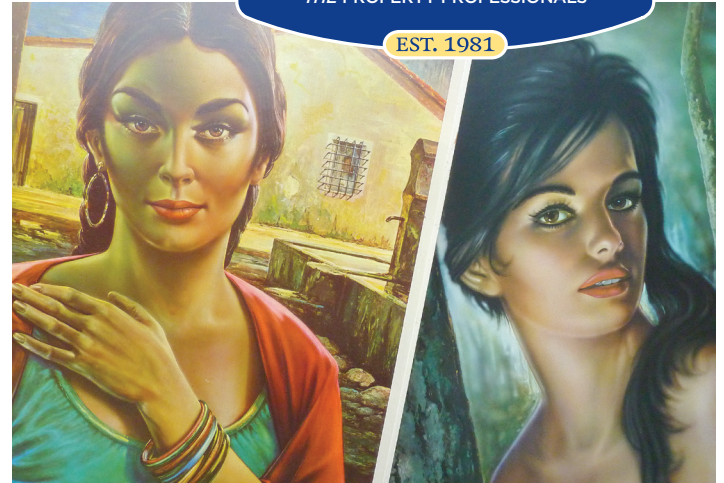
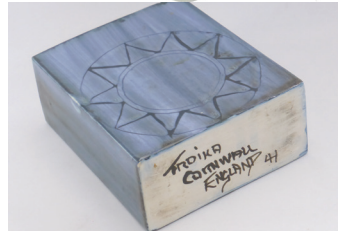
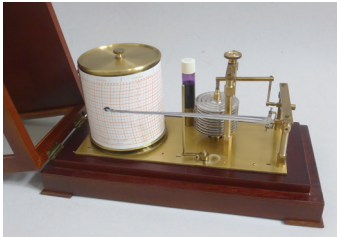
Long case clocks by John Oldfield and Thomas Corrall, brass carriage clocks inc. good quality 19th century repeater carriage clock, misc. mantle clocks, Viennese wall clocks.



Furniture

19th century oak dresser, various chests of drawers inc. Victorian, Georgian, Regency mahogany bow front chest of drawers, secretaire chest, and a 17th century chest, oak tambour top desk with fitted interior, furniture for re-upholstery, Chinese hardwood plant stand with marble top, Compactum type mahogany wardrobe, G Plan inc. light oak dining table, double wardrobe, side board, tea trolley, retro vintage teak sideboard, other retro furniture inc. Gordon Russell, Ercol, inlaid mahogany pier cabinet, various book cases and book shelves, hall stand, knee hole desk and pedestal desks, pine plank top kitchen table, various other pine furniture inc. cupboards, chairs and other tables, revolving office chair, unusual good quality round top revolving library table, Victorian mahogany round tiptop breakfast/loo table.

For information please call Chris Maulkin on 01531 634648



Pictures and Prints

Baxter prints, 19th century oval portrait, Alan King oil, antiquarian maps, Bill Sly oil on board, EL Rawlins water colour, large Victorian print Great Exhibition, set of Wheatley 'Cries of London', Thomas Bewick wood block, Vanity Fair prints inc judges etc some by Spy, etc.

China and Porcelain

Beswick figures, Lladro figures, Goebel birds, Royal Worcester figures, Poole pottery animals, Hummel, Staffordshire flat backs, Herend, Charles Meigh jugs, collection of Royal Doulton character jugs inc. Lord Kitchener, Wedgwood and other Jasper ware, Doulton series ware, Indian Tree part service, Masons Ironstone Regency, Royal Doulton Almond Willow, Royal Doulton Sherbrooke, Old Colony, Royal Gold, Royal Worcester Evesham and Chantilly, Wedgwood Susie Cooper design Black Eyed Susan and other part services, misc. blue and white, jelly mould, Troika vase, oriental china, Royal Doulton hunt tankards etc.

Jewellery

Various gold rings, 9 carat gold fob chain, curb bracelet, sovereign and half sovereign, various watches, costume jewellery.

Silver and Plate

Silver 4 piece tea service, canteens and loose flatware, silver plated punch bowl and ladle, silver cruets, pair silver sauce boats in presentation box, silver porringer, silver photo frame, sucriere, delicate Indian silver filigree basket, cased sets silver spoons, silver cigarette box, cigarette cases, silver tankard, 18th Century silver 2 handled vessel/trophy.

Vehicles

A useful trailer, 2004 Vauxhal Corsa 'Energy' twinport 1.2 petrol hatchback with MOT, Suzuki X90 automatic 4WD salon with targa roof.

Miscellaneous

Copper and brassware, misc cigarette tea and trade cards inc silks, postcards, stamps, various coins and bank notes, records inc 33 and 45 RPM, ephemera inc autographed photographs, tv and theatre related, sporting ephemera, books and magazines, signing bats etc, many autographed, tour 'roadie' suitcase with interesting labels, Penny Dreadful publications, newspapers etc, advertising ephemera, collection tour jackets and t shirts etc mostly 80s, hifi inc Dual turntable, Leak tuner, 2 pairs DJ record decks, BSR record deck, vintage record player, old radio valves, vintage radios inc. Ekco, modern DAB radios, Garrard record deck and pair Leak Sandwich speakers, misc. cameras and camera equipment inc. plate camera and miniature Rollei, militaria inc military marching compass, WWI death plaque, various binoculars, ammunition box, military knife, WWII helmet, Nepalese kukri, Airsporter vintage air rifle, BSA Meteor air rifle, bugles, signal stamp in original box, knobkerry, zulu spear, wooden bow, various old telephones, Arden floor standing heater designed by Charles Sepulchre, theatre spotlights, lava lamp, rocket lamp, telescopes, pair of omega 30 x 50 binoculars, linen and lace, kimono, vintage clothing inc. christening gown, tail coat, top hats etc, luggage and old laundry boxes, various rugs, doll's house, Mobo metal rocking horse, modern barograph in glazed case and Short and Mason barograph, other scientific instruments, taxidermy, old dolls, smoking ephemera, Wilcox and Gibbs sewing machine, Wilson coach built pram, various tools, lawn mower, strimmer, flat screen tvs, Apple Mac computer and speakers, even a grappling anchor for a fishing boat!

Viewing on Tuesday 9th October – 2 pm to 7 pm and on the morning of the sale

Buyer's Premium 15% (inc. VAT)

All items must be cleared from the saleroom by 5pm on sale day.

Saleroom phone number (View day and sale day only) 07968 694746

Auctioneer Chris Maulkin FNAEA

For information please call Chris Maulkin on 01531 634648